

ALL DIMENSIONS ARE APPROXIMATE + TO BE V.I.F. BY CONTRACTOR FOR BIDDING AND PRIOR TO PURCHASE. FABRICATION AND INSTALLATION OF MATERIAL. TYPICAL ALL DRAWINGS

515 CANAL ST 1ST FL NEW YORK NY 10013 T 212.343.8515 F 212.343.9515

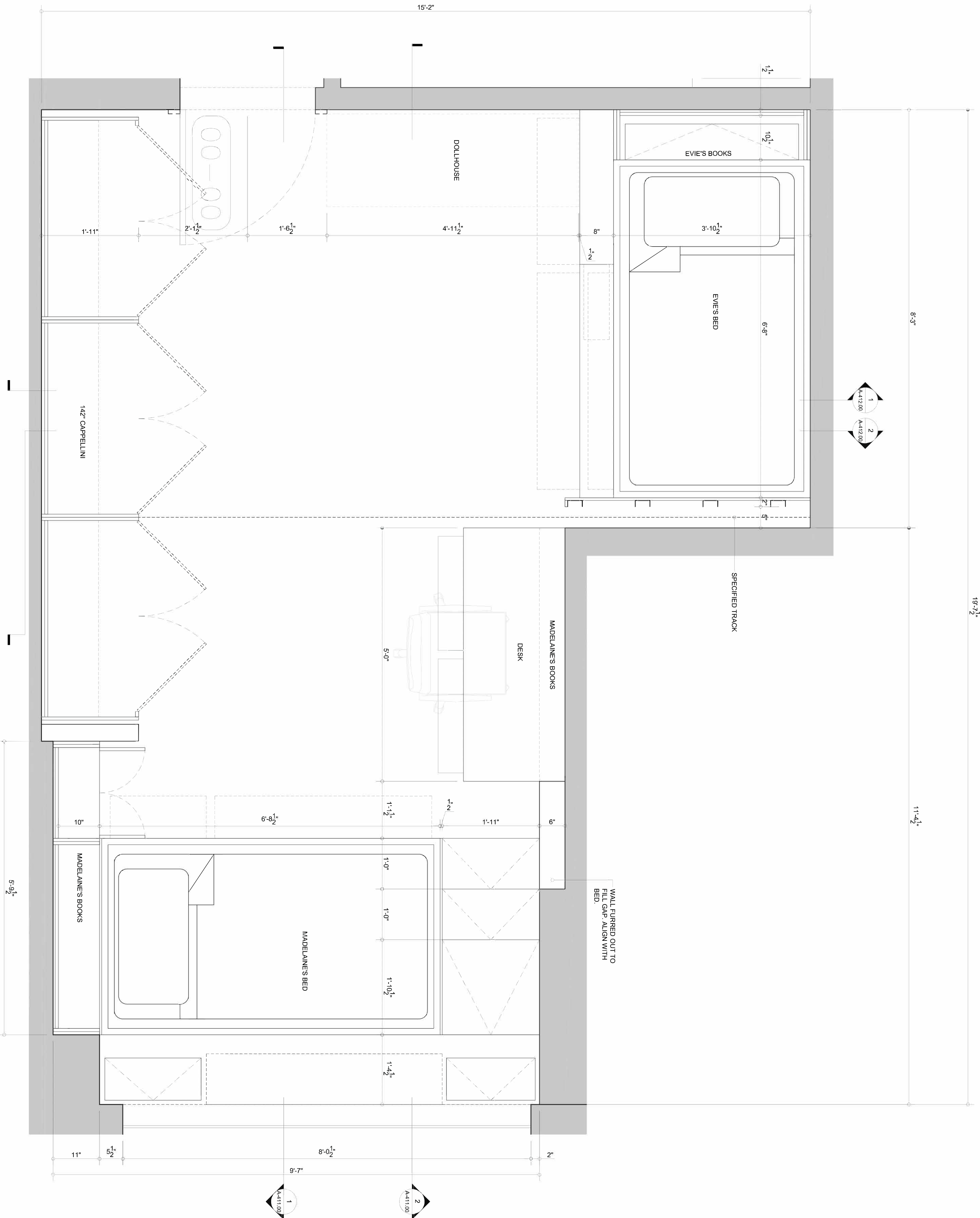
4.4.16	PROGRESS
5.27.16	PROGRESS
6.13.16	FOR BID

IT IS A VIOLATION OF THE LAW FOR ANY PERSON, UNLESS ACTING UNDER THE DIRECTION OF A LICENSED ARCHITECT, TO ALTER AN ITEM IN ANY WAY. IF AN ITEM BEARING THE SEAL OF AN ARCHITECT IS ALTERED, THE ALTERING ARCHITECT SHALL AFFIX TO THE ITEM HIS SEAL AND NOTATION "ALTERED BY" FOLLOWED BY HIS SIGNATURE AND THE DATE OF SUCH ALTERATION, AND A SPECIFIC DESCRIPTION OF THE ALTERATION

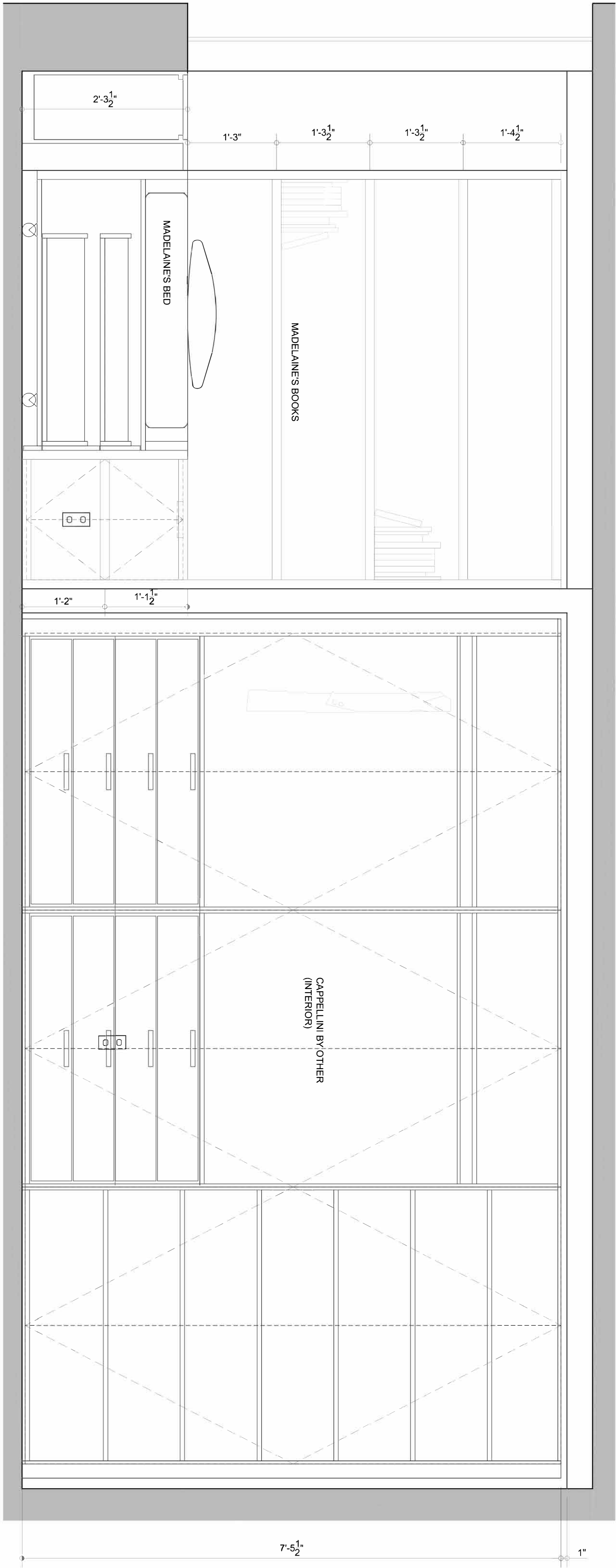
ENLARGED - BEDROOM 1

PROJECT NUMBER:
ISSUED
DRAWN BY:
CHECKED BY:
FILENAME:

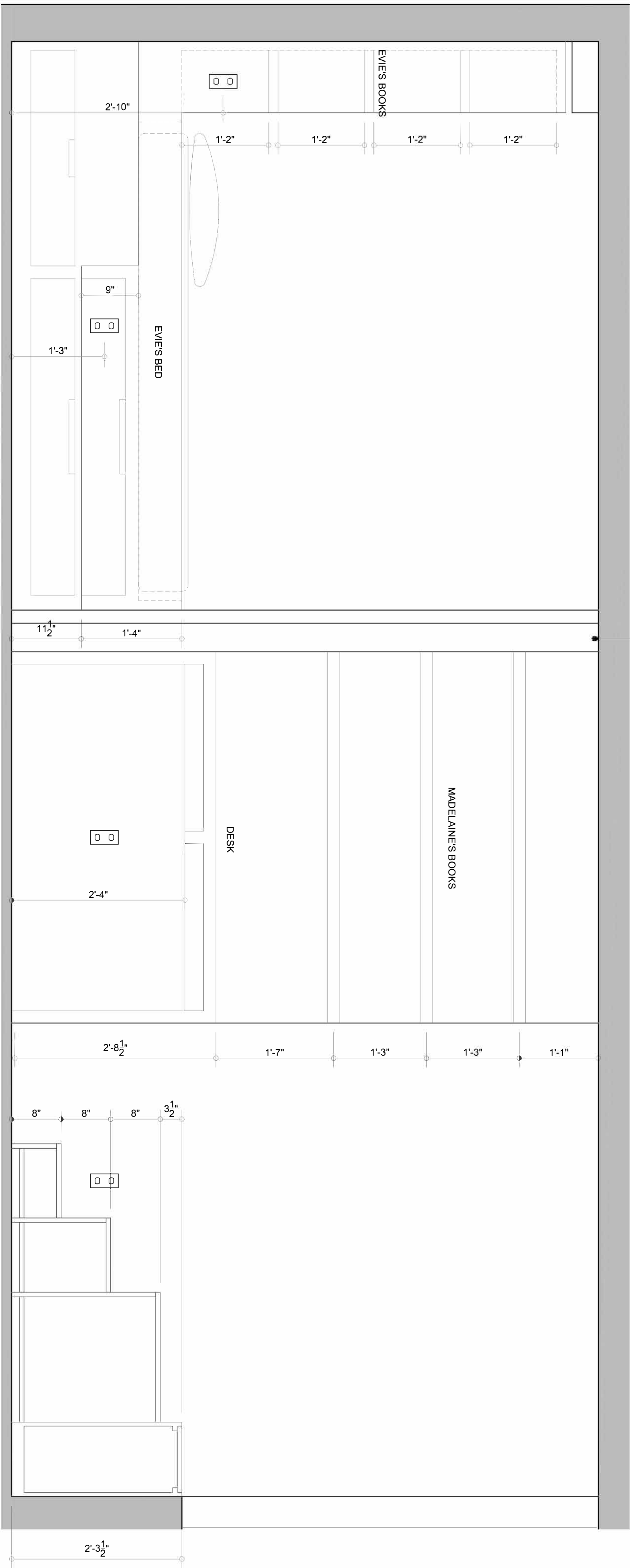
A-410.00



GENERAL NOTES:
- ALL DIMENSIONS ARE APPROXIMATE + TO BE V.I.F. BY CONTRACTOR FOR BIDDING AND PRIOR TO PURCHASE, FABRICATION AND INSTALLATION OF MATERIAL. TYPICAL ALL DRAWINGS

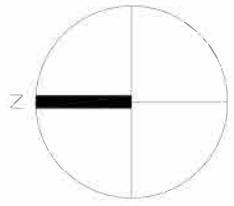


2 ELEVATION
1" = 1'-0"



SPECIFIED TRACK

1 ELEVATION
1" = 1'-0"



ALL DISCREPANCIES SHOULD BE
REPORTED TO OWNER AND
ARCHITECT PRIOR TO PURCHASE,
FABRICATION AND INSTALLATION
OF MATERIAL.

SIGNSEAL

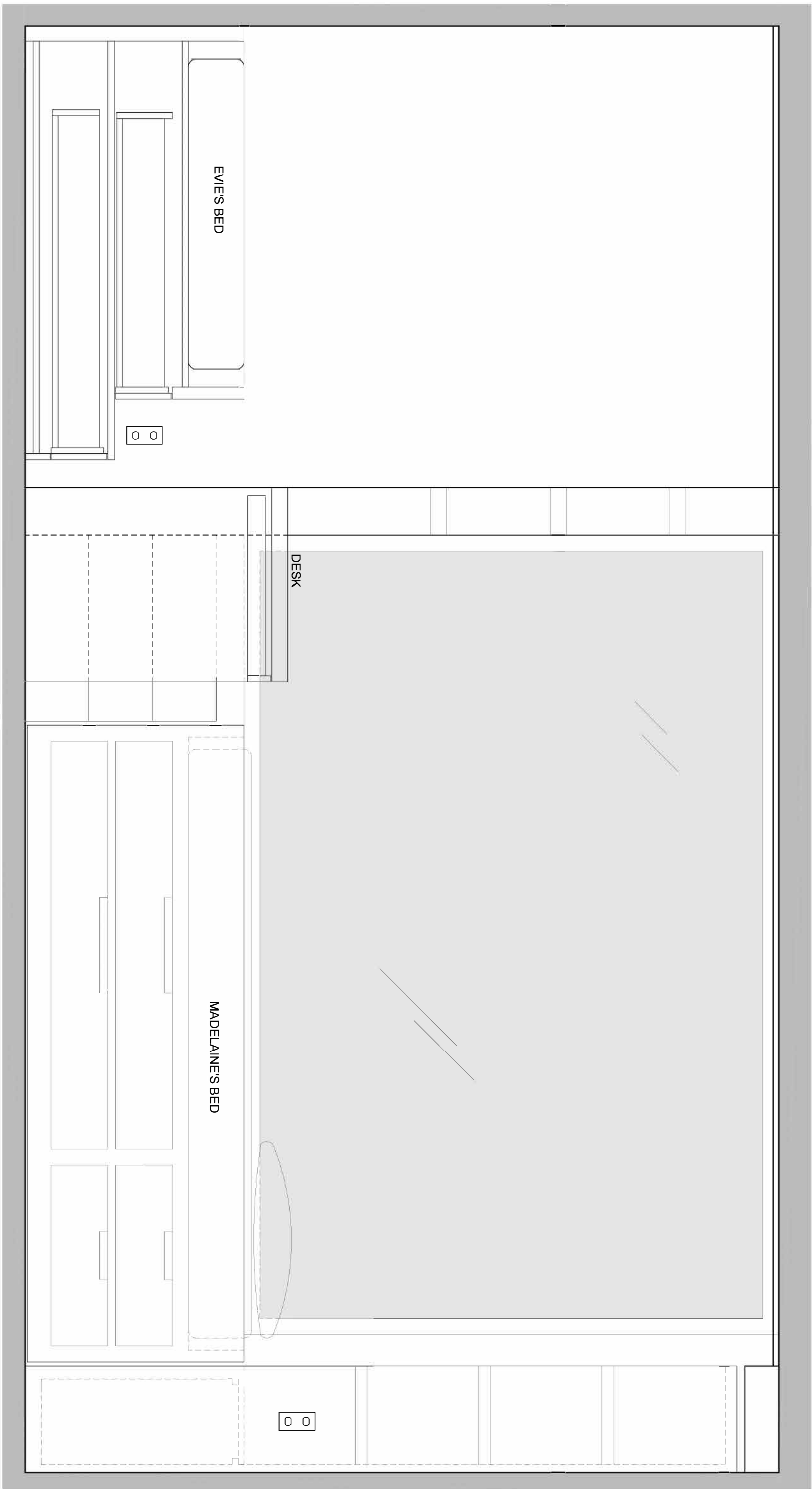
IT IS A VIOLATION OF THE LAW
FOR ANY PERSON UNLESS
A LICENSED ARCHITECT
OF A LICENSED ARCHITECT TO
ALTER AN ITEM IN ANY WAY. IF AN
ITEM BEARING THE SEAL OF AN
ARCHITECT IS ALTERED, THE
ALTERING ARCHITECT SHALL
AFFIX TO THE ITEM HIS SEAL AND
NOTATION ALTERED BY
FOLLOWS THE DATE OF SIGNATURE
AND THE DATE OF SIGNATURE
ALTERATION AND A SPECIFIC
DESCRIPTION OF THE
ALTERATION OF THE

AMES RESIDENCE

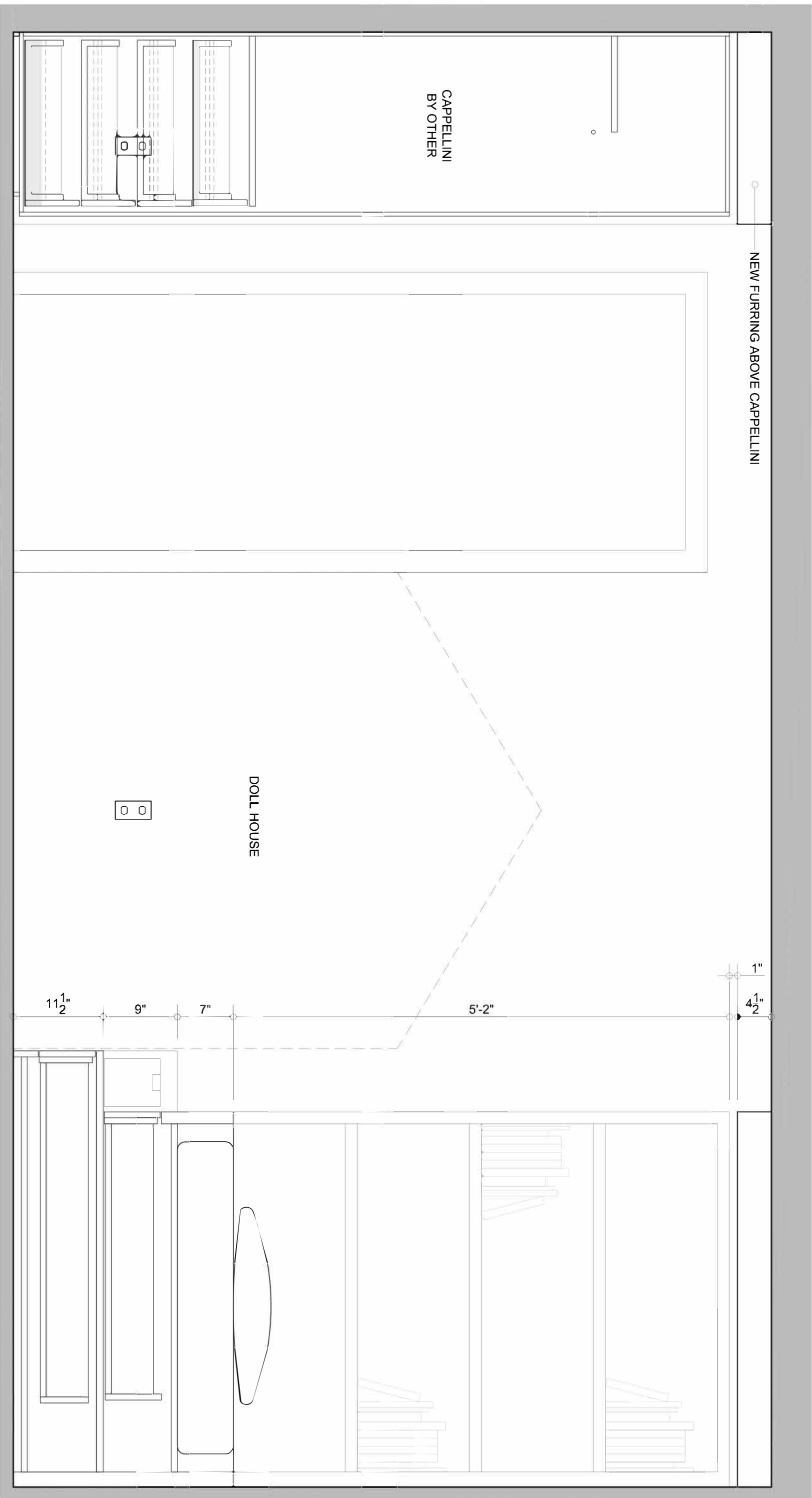
ENLARGED - BEDROOM 1

PROJECT NUMBER	
ISSUED	
DRAWN BY	
CHECKED BY	
REVIEWED	

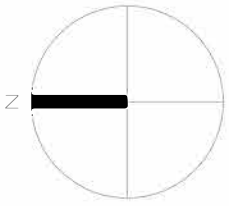
GENERAL NOTES:
- ALL DIMENSIONS ARE APPROXIMATE + TO BE V.L.F. BY CONTRACTOR FOR BIDDING AND PRIOR TO PURCHASE, FABRICATION AND INSTALLATION OF MATERIAL. TYPICAL ALL DRAWINGS



2 ELEVATION
1" = 1'-0"



1 ELEVATION
1" = 1'-0"



ALL DISCREPANCIES SHOULD BE
REPORTED TO OWNER AND
ARCHITECT PRIOR TO PURCHASE,
FABRICATION AND INSTALLATION
OF MATERIAL.

SIGNSEAL

IT IS A VIOLATION OF THE LAW
FOR ANY PERSON UNLESS
ACTING UNDER THE DIRECTION
OF A LICENSED ARCHITECT TO
ALTER AN ITEM IN ANY WAY. IF AN
ITEM BEARING THE SEAL OF AN
ARCHITECT IS ALTERED, THE
ALTERING ARCHITECT SHALL
AFFIX TO THE ITEM HIS SEAL AND
NOTATION "ALTERED BY"
FOLLOWED BY HIS NAME, TITLE,
FID AND THE DATE OF SUCH
ALTERATION AND A SPECIFIC
DESCRIPTION OF THE
ALTERATION

AMES RESIDENCE

ENLARGED - BEDROOM 1

PROJECT NUMBER	
ISSUED	-
DRAWN BY	-
CHECKED BY	-
DATE	-

DOOR AND HARDWARE SCHEDULE										
		DOOR								
NAME	FROM	TO	W	H	THK	MATL	HEAD	JAM	SILL	FINISH
03-02			8-5 1/8"	7'-7 1/8"	0-1.58"	WOOD				WD-01
03-03			8-5 1/8"	7'-7 1/8"	0-1.58"	WOOD				WD-02
03-04			8-5 1/8"	7'-7 1/8"	0-1.58"	WOOD				WD-01
03-05			8-5 1/8"	7'-7 1/8"	0-1.58"	WOOD				WD-01
03-06			8-5 1/8"	7'-7 1/8"	0-1.58"	WOOD				WD-03
03-07			8-5 1/8"	7'-7 1/8"	0-1.58"	WOOD				WD-01
										HW-01
										HW-02
										HW-03
										HW-04
										HW-05
										HW-06
										HW-07
										HW-08
										HW-09
										HW-10
										HW-11
										HW-12
										HW-13
										HW-14
										HW-15
										HW-16
										HW-17
										HW-18
										HW-19
										HW-20
										HW-21
										HW-22
										HW-23
										HW-24
										HW-25
										HW-26
										HW-27
										HW-28
										HW-29
										HW-30
										HW-31
										HW-32
										HW-33
										HW-34
										HW-35
										HW-36
										HW-37
										HW-38
										HW-39
										HW-40
										HW-41
										HW-42
										HW-43
										HW-44
										HW-45
										HW-46
										HW-47
										HW-48
										HW-49
										HW-50
										HW-51
										HW-52
										HW-53
										HW-54
										HW-55
										HW-56
										HW-57
										HW-58
										HW-59
										HW-60
										HW-61
										HW-62
										HW-63
										HW-64
										HW-65
										HW-66
										HW-67
										HW-68
										HW-69
										HW-70
										HW-71
										HW-72
										HW-73
										HW-74
										HW-75
										HW-76
										HW-77
										HW-78
										HW-79
										HW-80
										HW-81
										HW-82
										HW-83
										HW-84
										HW-85
										HW-86
										HW-87
										HW-88
										HW-89
										HW-90
										HW-91
										HW-92
										HW-93
										HW-94
										HW-95
										HW-96
										HW-97
										HW-98
										HW-99
										HW-100

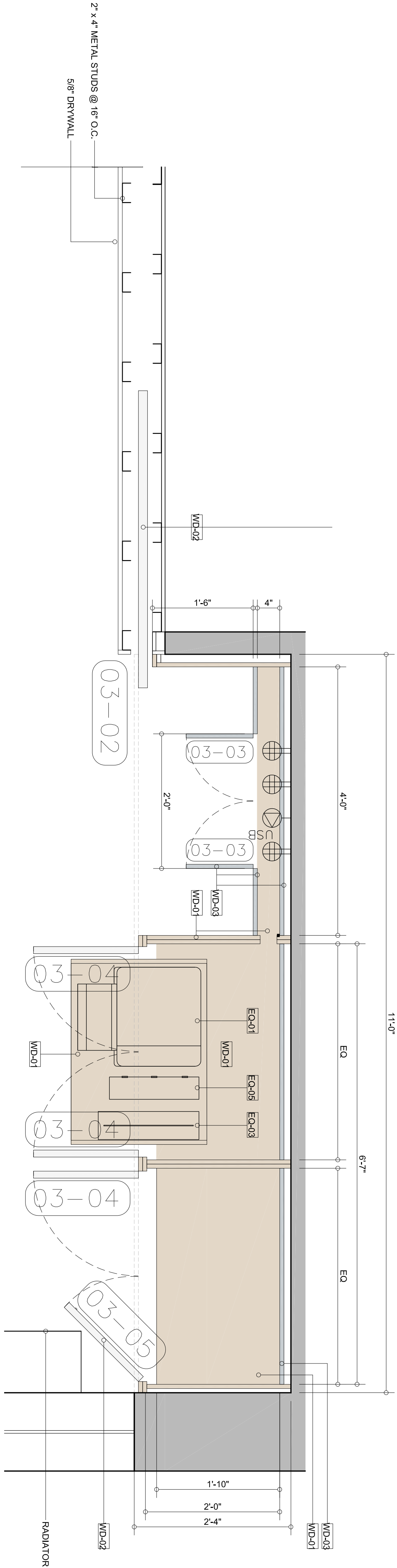
NAME	EQUIPMENT
WD-01	QUARTER SAWN OPEN POOR WHITE OAK WITH SATIN LAQUER FINISH. COLOR TBD
WD-02	QUARTER SAWN WHITE OAK SATIN WHITE LAQUER FINISH
WD-03	QUARTER SAWN WHITE OAK SATIN GRAY LAQUER FINISH

NAME	EQUIPMENT	W	D	H
EQ-01	EPSON PRINTER	1'-6"	2'-0"	0'-11"
EQ-02	DELL COMPUTER	1'-6"	1'-3"	0'-6"
EQ-03	SHREDDER	0'-6"	2'-0"	1'-6"
EQ-04	CABLE ROUTER	0'-2"	0'-9"	0'-9"
EQ-05	WIFI ROUTER	0'-4"	1'-4"	1'-0"

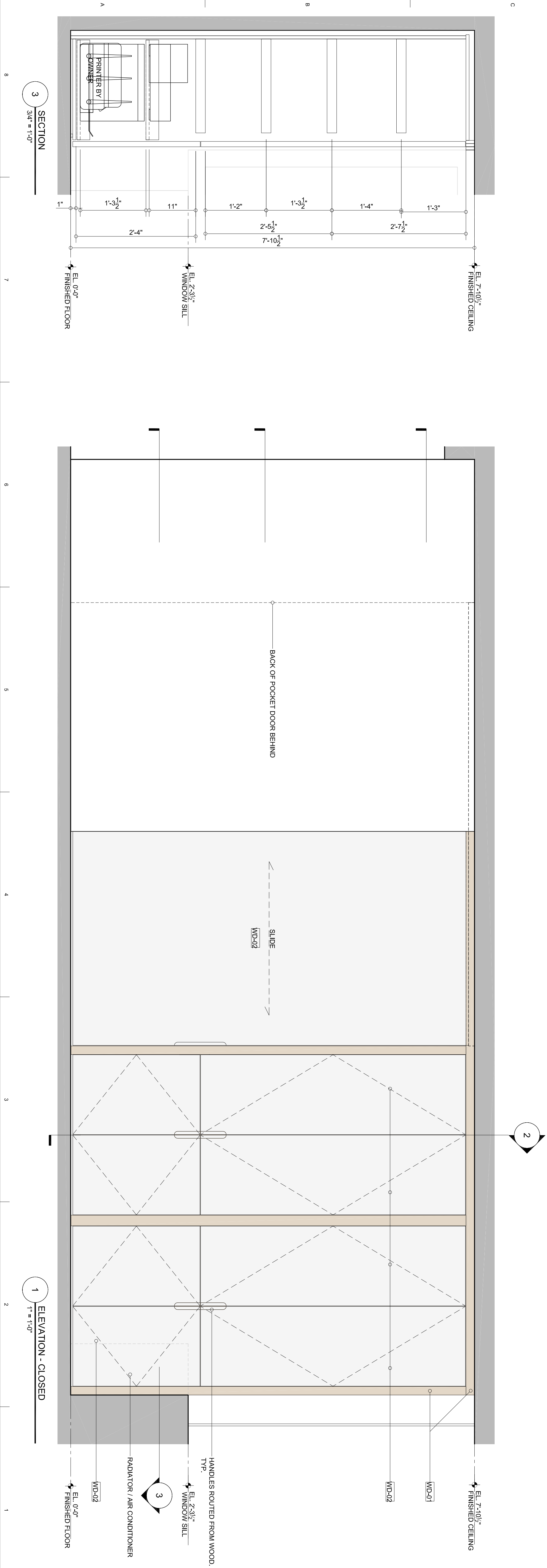
NOTE: ALL EQUIPMENT LOCATIONS ARE SCHEMATIC. TO BE COORDINATED WITH AUDIO VISUAL CONSULTANT.

GENERAL NOTES:
ALL DIMENSIONS ARE APPROXIMATE - TO BE V.L.F. BY CONTRACTOR FOR BIDDING AND INSTALLATION OF MATERIAL. TYPICAL ALL DRAWINGS
HARDWARE SETS:
HW-01 RAIL - SIGATSUNE F890-0HP
HW-02 STOPPER - SIGATSUNE F890-HSB
HW-03 HINGE - SIGATSUNE 230-C280T
HW-04 HINGE - SIGATSUNE PP
HW-05 HINGE - SIGATSUNE PP
HW-06 LATCH - SIGATSUNE KR-50

ALL DIMENSIONS ARE APPROXIMATE - TO BE V.L.F. BY CONTRACTOR FOR BIDDING AND INSTALLATION OF MATERIAL. TYPICAL ALL DRAWINGS



7 PLAN - UNDER WORK SURFACE
1" = 1'-0"



1 ELEVATION - CLOSED
1" = 1'-0"

